

NUMBER: SB 500-25-010, Rev B
MODEL: ECLIPSE EA500
SUBJECT: ELT Mounting Tray Replacement

Mandatory

www.ECLIPSE.aero

1. PLANNING INFORMATION

A. Effectivity

Aircraft Serial Numbers: 000001 to 000262, 000266 and 000267

Aircraft Serial Numbers: 550-0263 to 550-0265, 550-0268 to 550-0280, and 550-0282 to 550-0284

B. Reason

To ensure the Emergency Locator Transmitter (ELT) mounting tray configured with a Velcro strap is replaced with a mounting tray configured with a metal strap.

Revision B of this Service Bulletin updates the Labor Requirements and clarifies the Effectivity.

C. Description

This Service Bulletin provides instructions to replace the ELT mounting tray configured with a Velcro strap with a mounting tray configured with a metal strap.

NOTE: This change is to be completed at the time of ELT battery replacement.

D. Relevant Publications

06-117751 – EA500 AMM, current revision

E. Compliance

Eclipse Aerospace Inc. considers this to be a mandatory bulletin that must be accomplished at the next 300 hour/24 month inspection.

F. Approval

This Service Bulletin is based on engineering data that is FAA-approved, and the modification herein complies with the applicable regulations.

G. Labor Requirements

The following information is for planning purposes only.

(1) Estimated labor hours to perform:

Suggested number of personnel: 1

Replace parts and function check: 1.5 Hours

Total labor hours: 1.5 Hours

The above is an estimate based on properly equipped and experienced personnel complying with this Service Bulletin. Actual labor hours may vary depending on workforce experience, concurrent maintenance, discovery of other discrepancies, etc.

(2) Qualification of personnel:

- A person properly authorized under 14 CFR 43 to perform aircraft maintenance.

H. Weight and Balance Change

N/A

I. Electrical Load Data Change

N/A

J. Software Accomplishment Summary

N/A

K. References

06-117751 – EA500 AMM, current revision

06-117752 – EA500 IPC, current revision

L. Publications Affected

N/A

M. Export Control

These commodities, technology or software were exported from the United States in accordance with the Export Administration Regulations. These commodities, technology or software are intended for use only in the End User's country. An export license from the U.S. Department of Commerce may be required before these products can be re-exported, transferred, transshipped on a non-continuous voyage, or otherwise disposed of in any other country, either in their original form or after being incorporated into an end item. Diversion of this end-item or its use contrary to any applicable U.S. government license or to U.S. law is prohibited.

2. MATERIAL INFORMATION

A. Materials

Part Number	Description	Qty	Unit of Issue
452-3034-1	ASSEMBLY, MOUNTING TRAY ME406 YELLOW	1	EA.

B. Consumables

N/A

C. Tooling

N/A

D. Interchangeability/Intermixability of Parts

N/A

E. Part Re-identification

N/A

F. Cost

Contact Eclipse Aerospace Customer Care for information and availability.

3. ACCOMPLISHMENT INSTRUCTIONS

A. Procedure

Sign Off

(1) Job Set-up

(a) Make the aircraft safe for maintenance. Refer to AMM 20-00-01 MAKE SAFE FOR MAINTENANCE.

(b) Remove 311 CT - Dorsal Fairing. Refer to AMM-53-40-13-001-801 - Dorsal Fairing - Removal.

(2) Emergency Locator Transmitter — Removal

(a) Set the ON-ARM switch (6, [Figure 1](#)) to ARM.

(b) Loosen the two thumbscrews (3, [Figure 1](#)) on the control cable connector (4, [Figure 1](#)).

(c) Disconnect the control cable connector (4, [Figure 1](#)) from the connector (8, [Figure 1](#)).

(d) Disconnect the antenna coaxial cable connector (5, [Figure 1](#)) from the connector (10, [Figure 1](#)).

(e) Disconnect the strap (1, [Figure 1](#)) from the ELT (7, [Figure 1](#)).

(f) Remove the ELT (7, [Figure 1](#)) from the mounting tray (2, [Figure 1](#)).

Sign Off

(3) Emergency Locator Mounting Tray — Removal

(a) Remove the four bolts (1, Figure 2), four washers (top side) (2, Figure 2), four flat washers (bottom side) (4, Figure 2), four lock washers (5, Figure 2) and four nuts (6, Figure 2) from the mounting tray (3, Figure 2).

(b) Remove the mounting tray (3, Figure 2) from the aircraft.

(4) Emergency Locator Mounting Tray — Installation

(a) Put the ELT mounting tray (3, Figure 2) against the structure and align the bolt holes.

(b) Attach the ELT mounting tray (3, Figure 2) to the structure with the four bolts (1, Figure 2), four flat washers (top side) (2, Figure 2), four flat washers (bottom side) (4, Figure 2), four lock washers (5, Figure 2) and four nuts (6, Figure 2). Tighten the four bolts (1, Figure 2) to 12-15 lbf.in (1.4-1.7 Nm).

(5) Emergency Locator Transmitter — Installation

(a) Install the ELT (7, Figure 1) in the mounting tray (2, Figure 1) at an angle so the locking ears opposite the direction-of-the flight arrow fits into the mounting tray locking slots.

(b) Press the ELT (7, Figure 1) down into the mounting tray (2, Figure 1) until fully seated.

(c) Connect the antenna coaxial cable connector (5, Figure 1) to the connector (10, Figure 1).

(d) Apply sealant, non-corrosive silicone (RTV 162) to the rear of the 9-pin control cable connector (2, Figure 1) to cover any exposed wire ends and all of the connector pins.

(e) Connect the control cable connector (4, Figure 1) to the connector (8, Figure 1) with the two thumbscrews (3, Figure 1). Tighten the thumbscrews until the control cable connector (4, Figure 1) is secure.

(f) Secure the strap (1, Figure 1) around the ELT (5, Figure 1).

(g) Refer to the label (9, Figure 1) for torque instructions.

(h) Set the ON-ARM switch (6, Figure 1) to ARM.

(6) Job Close-up

(a) Remove all tools, equipment and unwanted material from work area.

(b) Install 311 CT - Dorsal Fairing. Refer to AMM-53-40-13-041-801 – Dorsal Fairing - Installation.

(c) Do an adjustment/test of the ELT system. Refer to AMM-25-60-00-071-801 – Emergency Equipment - Adjustment/Test.

(d) If all other maintenance is complete, return the aircraft to service. Refer to the AMM 20-00-02 RETURN TO SERVICE (AFTER MAINTENANCE).

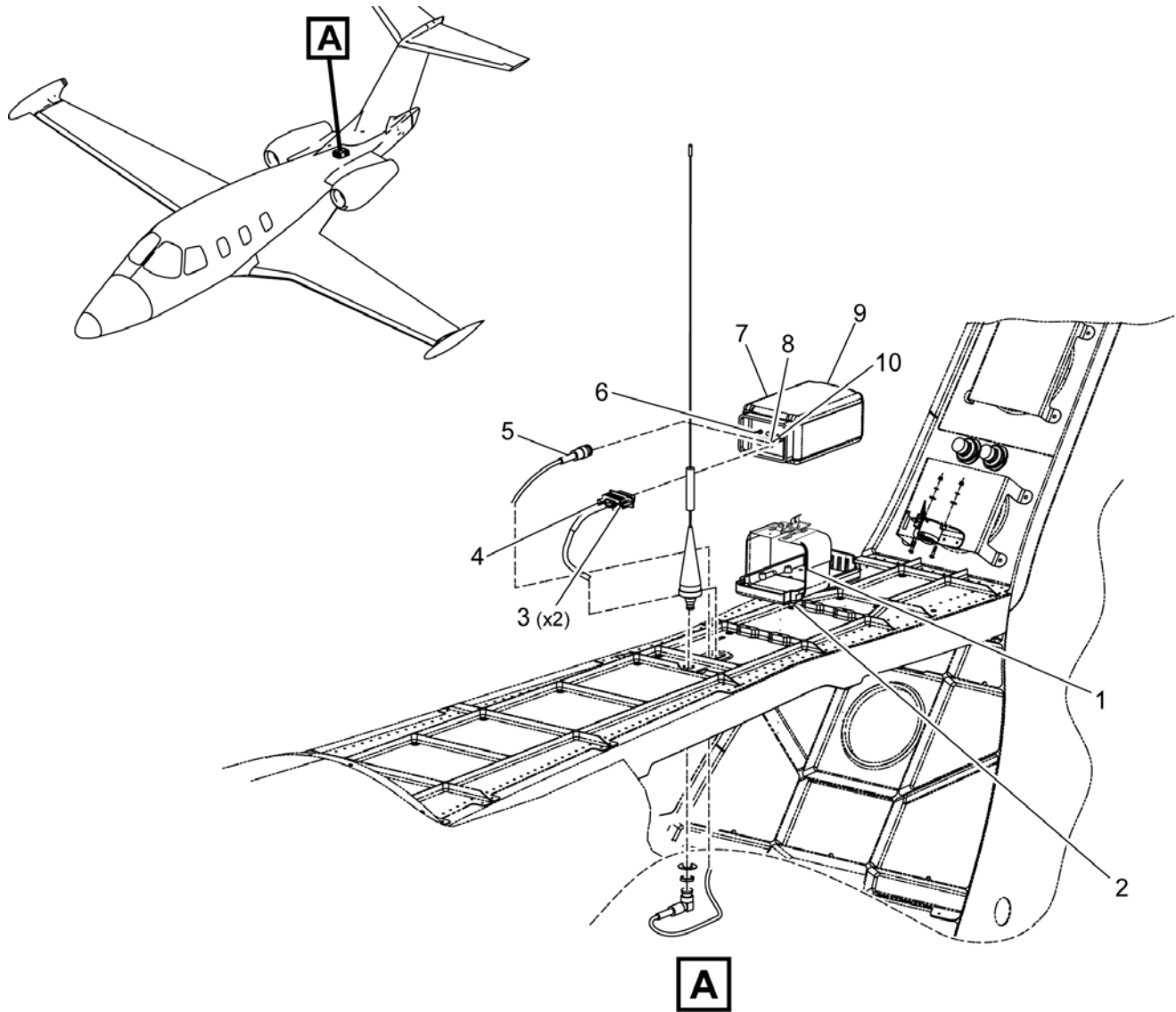


Figure 1. Emergency Locator Transmitter - Removal / Installation

50101319B

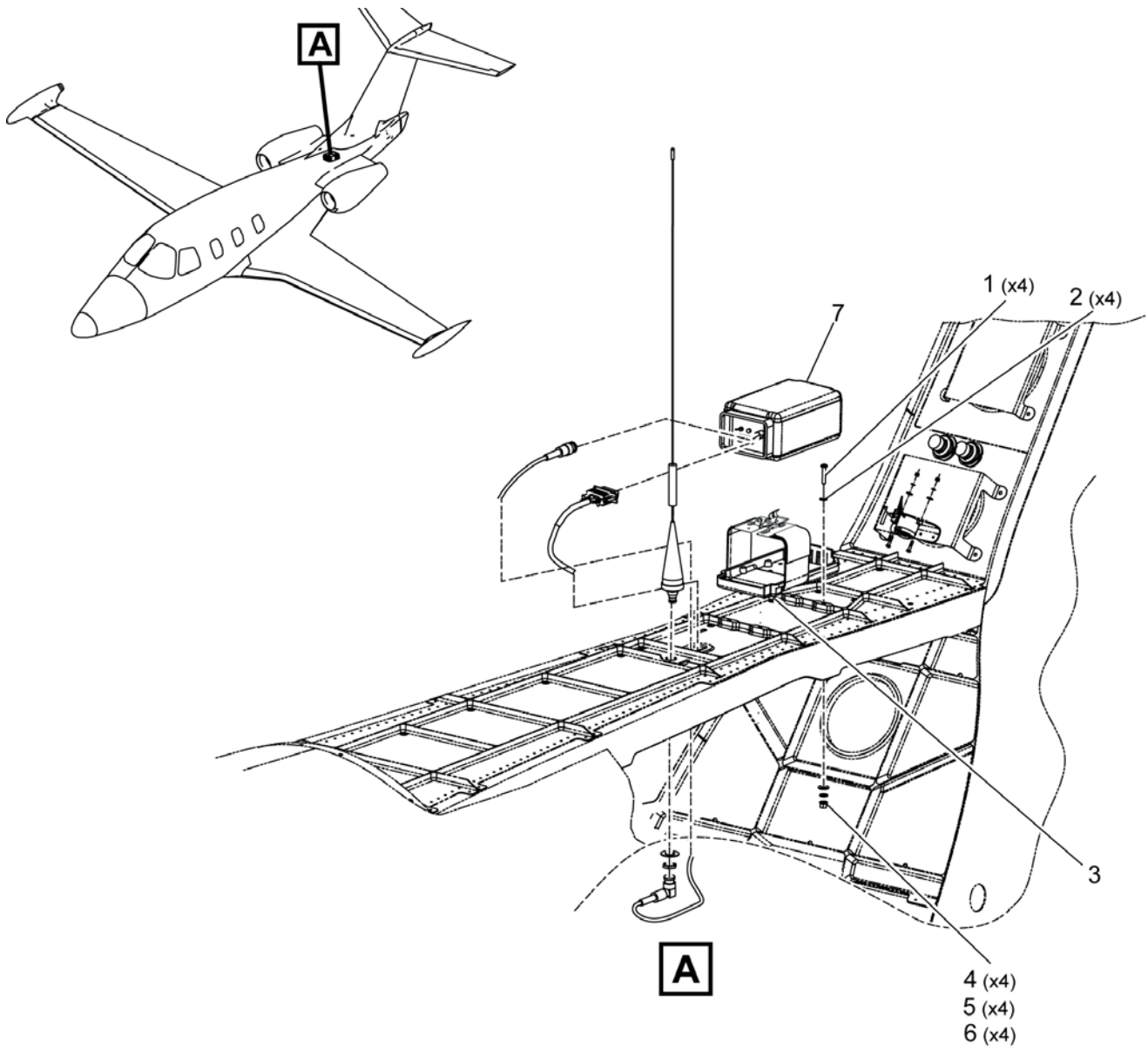


Figure 2. Emergency Locator Mounting Tray - Removal / Installation

50101320B

B. Limitations and Procedures

N/A

C. Parts Disposition

N/A

4. PART MARKING

N/A

5. RECORD OF COMPLIANCE

Upon completion of this Service Bulletin, make an appropriate maintenance-record entry specifying the Service Bulletin number.

6. NOTIFYING ECLIPSE AEROSPACE

On completing this Service Bulletin, the operator/maintainer shall complete the attached Compliance Record and send it to Eclipse Aerospace via regular mail, fax, or e-mail.

Mailing Address	Eclipse Aerospace Incorporated ATTN: Service Engineering 2503 Clark Carr Loop SE Albuquerque, NM 87106
Fax	1-505-241-8802
E-mail	sbcompliance@eclipse.aero

[Intentionally Blank Page]

